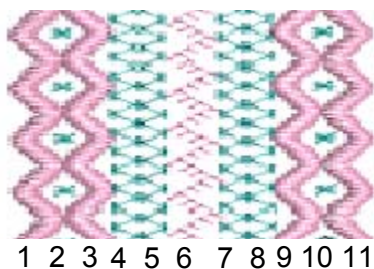


Scalloped Diagonals

Delicate stitches flanked by satin stitched borders make a beautiful combination for finishing table linens, blouses, and christening gowns.



- Open the BERNINA® Embroidery Software.
 - Select the Design Tab.
 - Select Pattern Run Outline Stitch
 - Open Object Properties and select Stitch #402 from the Home Dec Folder
 - Using the Open Curve Tool, click at the top of the screen, then at the bottom of the screen, touch the Enter key on the keyboard to confirm.
 - Complete the rest of the design in the same manor, creating parallel lines of decorative stitches within the stitching area of the embroidery hoop.
-
- Follow directions below to complete the recipe
 - Line 1 (already done): Home Dec Folder >stitch #402
 - Line 2 – Heirloom Folder, Stitch #711. Select “Make current”; the next dialogue box will give you other options. Select the “spacing” and change the spacing to “11”> OK. Select the stitch and nudge it into place using the arrow keys on the keyboard.
 - Line 3 - copy/paste/mirror horizontal Line 1 and nudge to the right
 - Line 4 – Quilting Folder, Stitch #a306
 - Line 5 – Copy/paste/mirror horizontal Line 4. Move to the right
 - Line 6 - Quilting Folder, Stitch #337
 - Lines 7,8,9,10,11 are a mirror imaged copy of the first five lines.
 - Use the CTRL key to select the first five rows. On the lower left side of the screen, click on the “Group” tool.
 - Copy/Paste the selected lines. Then select the Mirror Horizontal tool. Again, use the arrow keys on the keyboard to move these copied stitches to the right.

Note: If using this recipe as a continuous border, use the longest axis of the hoop to minimize the number of hoopings needed.