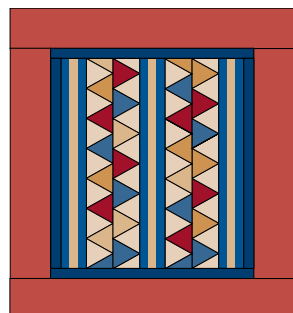
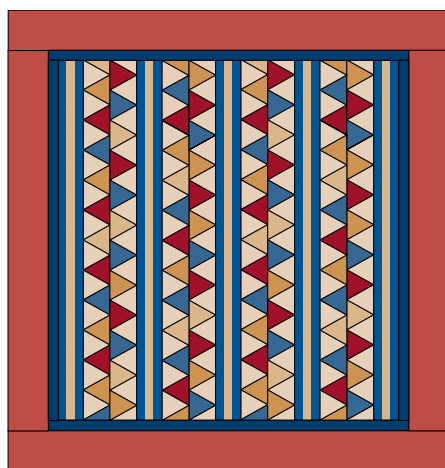


# SIZE OPTIONS: Kalamkari Strippy

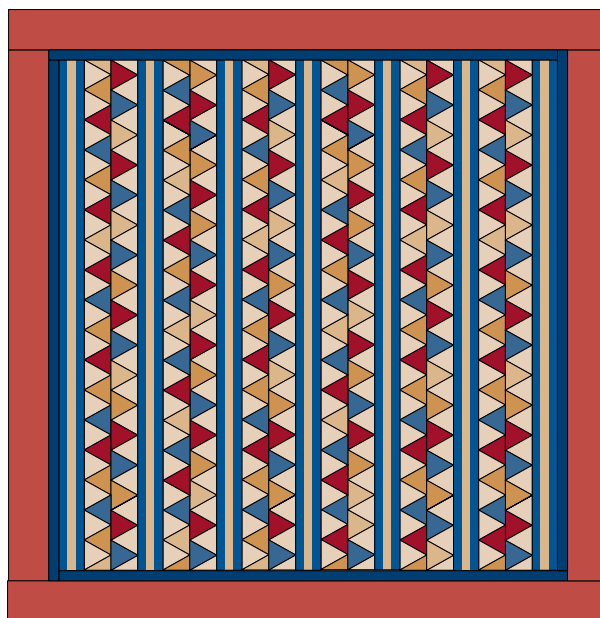
From the September/October 2008 issue of *Fons & Porter's Love of Quilting*



Crib



Throw



Queen/King

## SIZE OPTIONS

	Crib (41 $\frac{1}{8}$ " x 47 $\frac{3}{8}$ " )	Throw (65 $\frac{1}{8}$ " x 70 $\frac{1}{2}$ " )	Queen/King (88 $\frac{3}{8}$ " x 93 $\frac{5}{8}$ " )
<b>Zigzag Rows</b>	2	4	6
<b>Sashing</b>	3	5	7
<b>4 Dark Prints</b>	$\frac{1}{2}$ yard each	$\frac{3}{4}$ yard each	1 yard each
<b>Dark Red Print</b>	1 $\frac{3}{8}$ yards	2 yards	2 $\frac{5}{8}$ yards
<b>Tan Solid</b>	$\frac{1}{2}$ yard	1 $\frac{1}{4}$ yards	2 $\frac{1}{4}$ yards
<b>Navy Solid</b>	$\frac{1}{4}$ yard	$\frac{1}{2}$ yard	$\frac{5}{8}$ yard
<b>Navy Stripe</b>	1 $\frac{3}{8}$ yards	2 yards	2 $\frac{5}{8}$ yards
<b>Backing Fabric</b>	2 $\frac{1}{2}$ yards	4 yards	8 yards
<b>Batting</b>	Crib-size	Twin-size	Queen-size

Materials